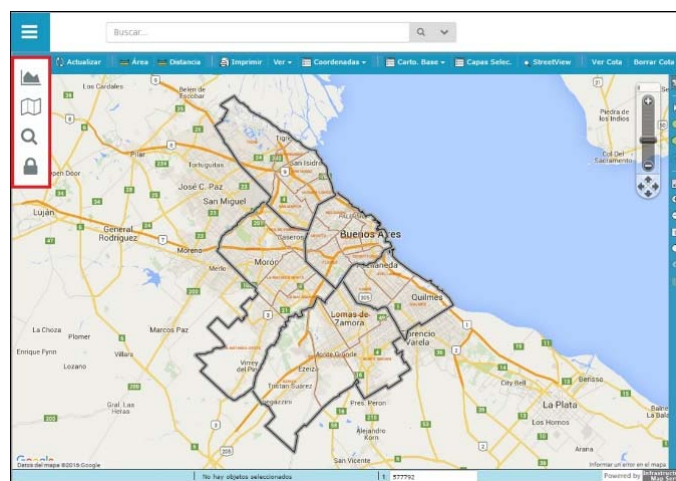


**GeoSITM** is a software solution for publish GIS data from any source in a single and fast web application, working together with existing corporate software solutions. GeoSITM was developed using our proved software framework for building interactive GIS applications, and can be used in any type of operation like utility companies, territory management, or asset management.

## Main Features

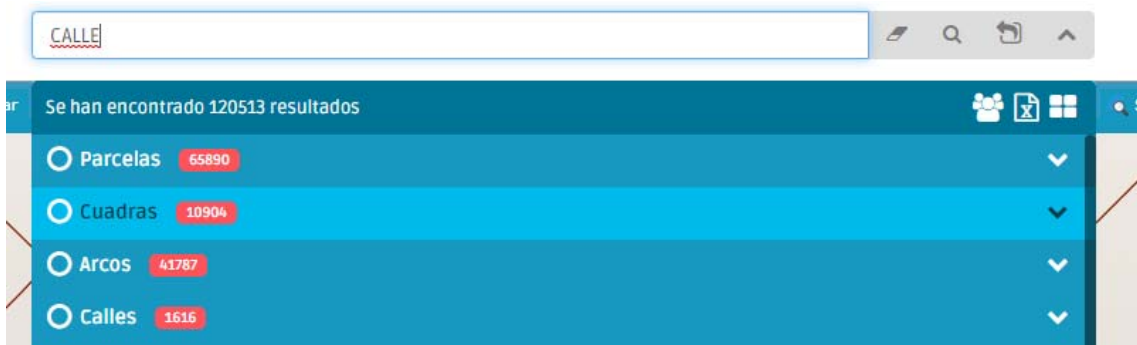
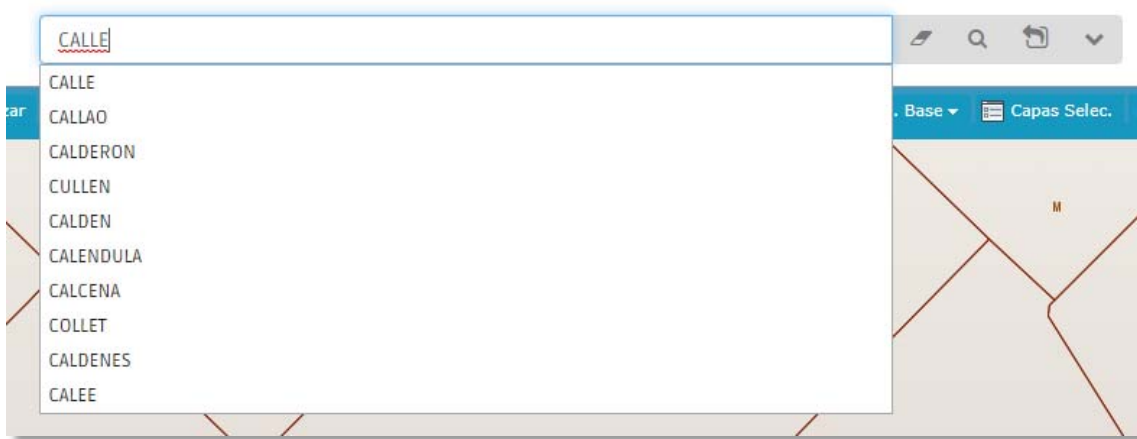
- Full web application. Responsive design, can be used on all major web browsers in the market, also in tablets and smartphone with large screens
- Can be integrated with existing authentication and authorization platforms like Active Directory
- Present a base map that can be configured for OpenStreetMap, GoogleMaps, BingMaps, or any other map service available
- For corporate GIS data, you can publish your own maps and layers, using the middleware geographical component, included in the solution
- Use any major database on the market that accepts geographical types, like Oracle, Postgres, MSSQL, etc.
- Can use opensource or proprietary map viewers like OpenLayers, MapGuideOS, Autodesk AIMS, etc.
- Developed for high availability. All component can be deployed in clustered infrastructure.
- Have a complete set of security rules and features that allow a precise configuration of access for groups and users
- Can access any data source, all in the same deployment, including document files.



## Global Search

The primary way for interact and search specific information is the global search field in the top of the application main page. In the textbox the user can type any piece of data, and the

application will output the results instantly, searching in all configured data sources including the content of text files (Word, Excel, PDF, etc.)



From any individual search result, the user can get all the related data of that object and go to the map view or vice versa.

**Detalle de Objeto**

**Atributos**

Nombre	Valor
Identificante	003192458
Servicio	AGUA
Cliente Tipo	
Procedencia	
Distrito	ALMTE BROWN
Numero De Expediente	192458
Numero De Puerta	1480
Superficie Comercial	188
Partida	
Parcela Catastral	
Segmento	640841

**Detalle de Objeto**

**Atributos**

**Relaciones**

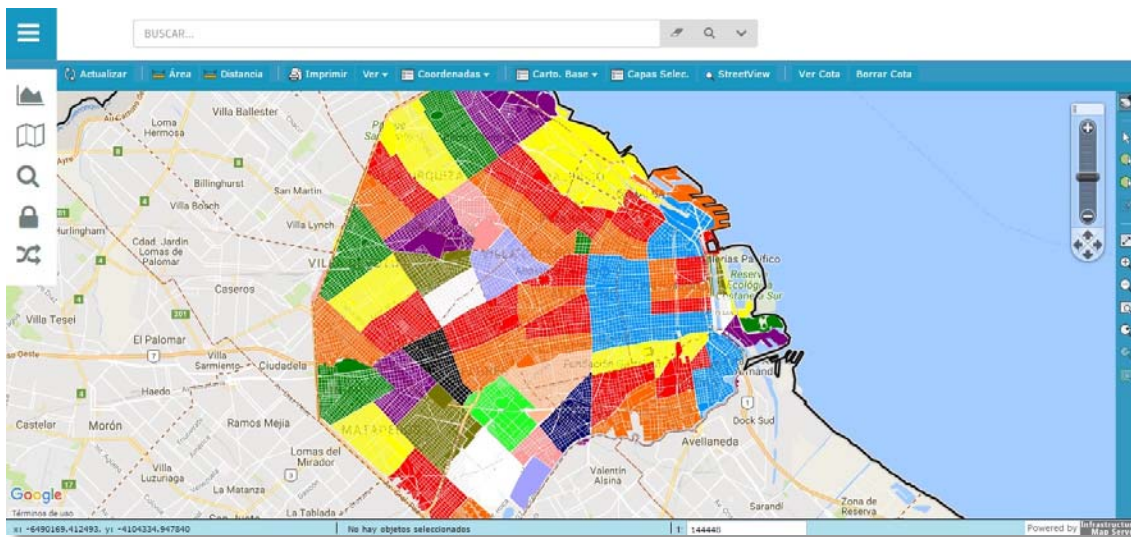
**Gráficos**

Nombre	Valor
Área (m2)	187.8843
Perímetro (m)	57.34
Cant. Nodos	6
Cant. Gráficos	1

## Theme Mapping

The user can create theme maps in the web application itself, using a comprehensive wizard that helps in the construction of beautiful map views. Theme maps are useful in analysis in variables combined with up to date cartography.

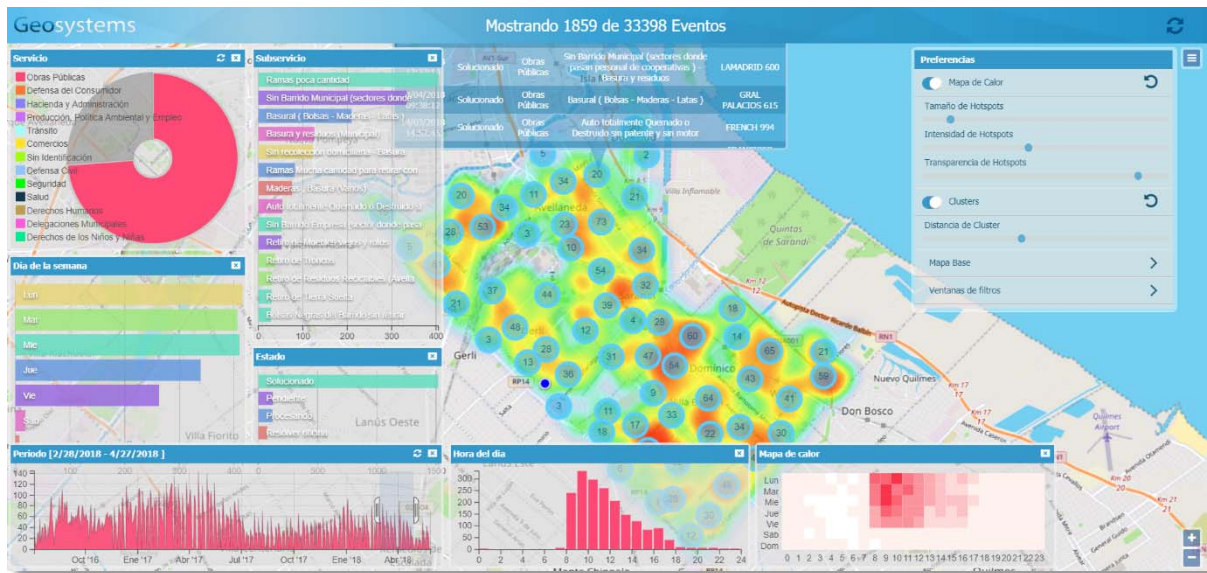
The analyst can select data sources, layers, styles, areas, etc., and save that configuration in a map library that can be reused and shared with other users.



## Event Analyzer

A complete event analyzer is included in the base features. With this tool, the user can select specific data that have occurrences and instances over time and visualize that information in a full interactive map view. All the related properties and data can be selected to filter and enhance the analysis, including a full view of the “time” dimension.

The map view than be a cluster view, or a heat map, that is very useful for fast comprehension of event situation, progressions and trends.



Geosystems

<https://www.geosystems.com.ar/>

Esteban de Luca 2223 (C1246ABS)  
Ciudad Autónoma de Buenos Aires Argentina  
Teléfono: (5411) 4941-8441  
geositm@geosystems.com.ar